



NEWSLETTER

„ I can not do all the good that the world needs. But the world needs all the good I can do.”

I can make a change by going through this world with an open heart, an open mind and open arms.

1

EDUCATIONAL SUPPORT



FAMILIES

- ◆ Stay together and raise the children at home
 - ◆ Be safe and healthy
 - ◆ Having an own income
- ◆ Provide education to children



3

COMMUNITY

Events & Projects for the future

We work closely together with the village leaders, the social welfare of the moshi municipal and also partner with several other organisations in order to create a better future and equal chances for families living in Kilimanjaro Region.

40 FAMILIES
9 COMMUNITIES



EDUCATIONAL

SUPPORT

Educational support coming from Kipepeo Family Foundation only gets provided to children of families in which we are not able to empower their parents. If parents can't fully take over the responsibility for their children we make sure it is safe at home and parents care for their mental and physical health. We take over school costs, payment for the school-uniform, buy books and other school items needed. If wished so, we also provide help on finding a good school and deal together with the parents with upcoming school issues.

The educational support is having an impact on the families and communities when we are thinking longlasting. It may not give back the responsibility for children back right now, but is raising the chance, that when the children are grown up, they can step out and have stronger possibilities to be responsible for their own children.

Important for us is that the when we take over the educational support we keep up the help until the child is completely graduated and ready to work.



Get a monthly sponsor for one of the children and be part of its great future:

Verein Kipepeo

Stutzligasse 22, 3855 Schwanden

Swift/BIC UBSWCHZH80A

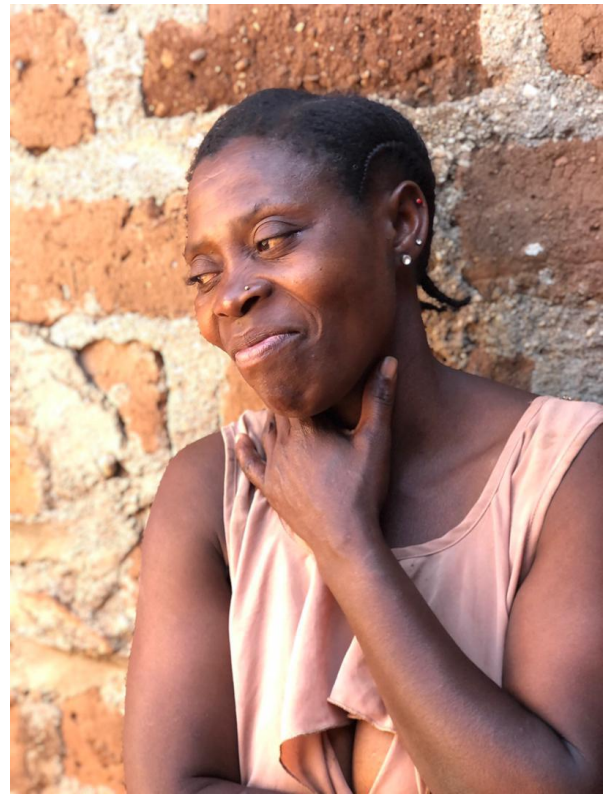
IBAN CH84 0024 1241 10690401 C

UBS 80-2-2

“I did not just get help for a period of time.

I got empowered to help myself and my family for a lifetime”.

Mama Lissa



FAMILIES

Kipepeo has an impact on 9 various communities in Kilimanjaro Region, Tanzania. In total, 35 different Families got empowered already and with 10 others we are currently in the process of finding a good solution on how to strengthen them.

It is a privilege and honour for us that you reading this, are spending your time, interest, money, thoughts, prayers and so much more for us. Without you and all of Kipepeo's donors we would not have an impact in so many lives.

To take you with us into our daily work, we wrote a brief case example based on a true incident.

Initial Situation:

Mama Lissa is living together with her second husband and a small child and since a while as well with three more children from her ex-husband. They fled after many years of living in bad condition with their father and found their mother Lissa whom it was familiarly forbidden to contact them before. Mama Lissa now suddenly has to care for 3 more children. Fortunately Mama Lissa's new husband accepted the children and allowed them to stay with the condition that Mama Lissa alone is financially responsible for them. They are now all living in one room with one bed and a small sofa. The kids took the birth certificate with them when they fled so that Mama Lissa could arrange the school transfer.

Goal:

Mama Lissa shall be able to get a financial stable income in order to provide education to her three children and support her current husband with the fourth child and share costs with him for all health and living costs of their family.

Solution:

We empower Mama Lissa with a business to sell clothes because it was her wish, she has skills and experience for it and it is a business which is needed in the area where they are living. Kipepeo provides schoolfees for one boy in secondary school for one year until she takes over when her business is running. Her second son is starting university half a year after business start, she will give her best to take over directly the costs. For the third child she took over the costs from the beginning on.

Outcome:

Mama Lissa is running her business selfdependently, she was able to provide her son's entry to university and we are looking forward to when she takes over the fees for secondary school too. She could create a loving and caring atmosphere at their home too. We are very proud of Mama Lissa how she manages her difficulties, always gives her best and rarely complains about anything.

COMMUNITY

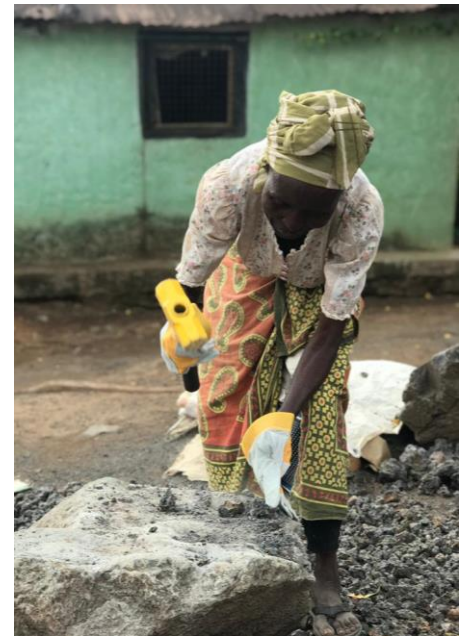
Events which Kipepeo was hosting or participating:

1. Day of the african child
2. International family- and parentsday

Both of the events were held close in a nearby location to our communities. Aim was to raise awareness about the importance of the role each parent has, the importance of caring well for the children and speaking about all of their rights and values. Not missing was good food and fun with music and dancing for everyone attending.

Future view:

To have more impact on bundled people and reach out further than the families iteslves we decided to go for an additional projet which is run by Kipepeo Family Foundation. We are going to buy 4 hectares of land where we will farm and keep animals. This project will generate jobs in the located area where under our supervision also be people working which would not get an opportunity elsewhere. It also enables us to get more self-sustainable. You can read in the box next to, how we would like to do so.



We will keep cows and pigs which we can one by one give to a family in need. They keep it for getting the milk or selling the meat one day. Idea is that all firstborns of those animals we gave away come back to Kipepeo which will then automatically be a donation for a new family in need again.

